

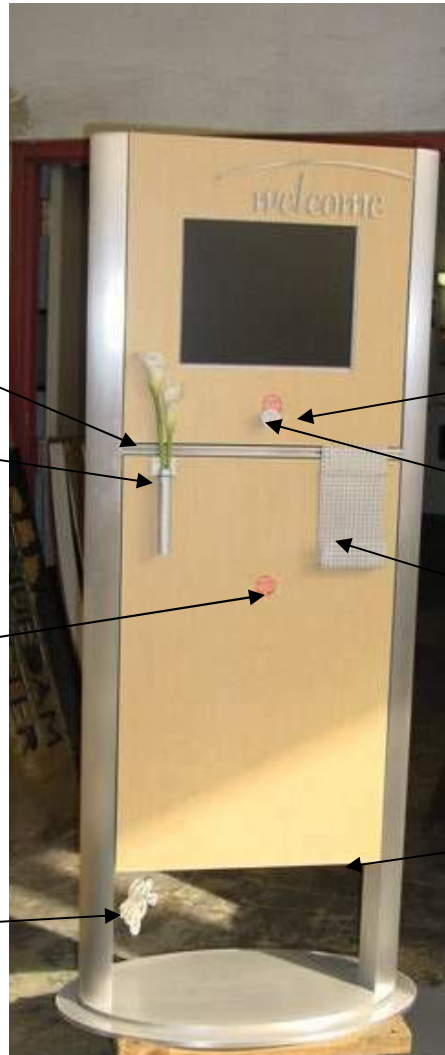
Set Up and Access

Accessory Track for Literature Dispensers and Bud Vase

Bud (flower) Vase Goes Here
 (Note: it normally would be attached to "accessory track" but for this unit is put on with double sided tape so the unit can be opened more easily for demonstrations.)

Lower Magnetic Lock – See small hole drilled in plastic laminate. Apply "magnetic key" directly over hole – push in slightly and then door should fall forward. (Remove red label.)

Power Connection – 110 volt



Upper Magnetic Lock – See small hole drilled in plastic laminate. Apply "magnetic key" directly over hole – push in slightly and then door should fall forward. (Remove red label)

White Knob is the Magnetic Key

Literature Dispenser – this can go in "accessory track" on front or back of unit.

Optional Network Connection (Ethernet) feeds through hole on bottom (then gets connected to Dell Computer inside.)

To Service Unit and Access CD or 1.4 megabyte Diskette Drive:

1. Open Lower Door with Magnetic Key
2. Lift up keyboard (with built in trackball)
3. Turn on Computer (if it is not turned on automatically)
4. To Insert CD, Push CD Button, CD Drive Tray Will Extend. Insert CD and Gently Press on the Drive Tray to Retract
5. To Insert a Diskette, Simply Insert the Diskette in the Diskette Slot
6. To Access Files, Use the Trackball as you would use a Mouse to access Explorer. Copy the files to the Desktop.

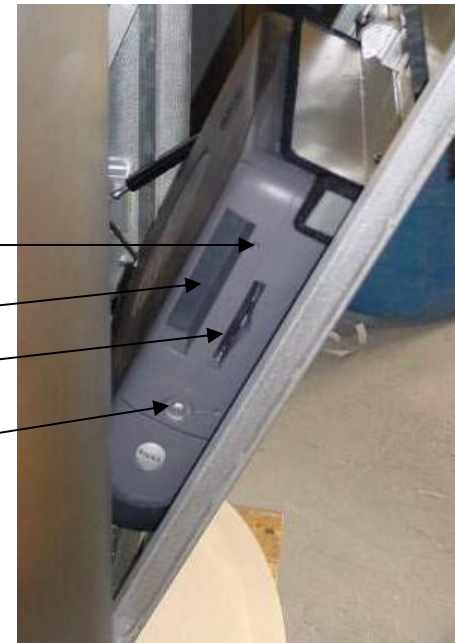


CD Drive Button

CD Rom Drive

Diskette Drive

Power Button



Retracting the Keyboard

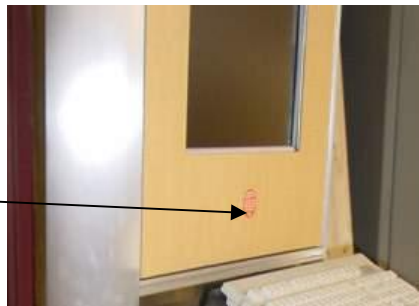
To release the keyboard, pull up at center of brackets at either side of keyboard. (CAUTION: Be careful not to get your fingers caught in the brackets!)



To Access LCD Monitor

1. Open Upper Door by holding Magnetic Key over small hole drilled in laminate. Gently push in until lock releases.

Magnetic Lock





Running a Slide Show

Motivations is designed to run any graphics program and is ideally suited for PowerPoint presentations.

PowerPoint presentations can be saved as a “PPT” file, which can be edited and run using PowerPoint. You can also save a PowerPoint file as a “PPS” – or PowerPoint “SHOW”, which will run independently of the PowerPoint software by simply double-clicking on the file name/icon.

Make sure you apply “TRANSITIONS” and “AUTOMATIC TIMING” using the “SLIDE SHOW / SLIDE TRANSITION” options.



Also be sure to set the Slide Show options to “Browsed at a kiosk (full screen)” and “Using Timings, if present”

NOTE: A demonstration show with slides for restaurants, hotels and retailers is included as a “PPS” on the “Desktop” and as “PPT” in the “My Documents” folder.

